



# COMPANY PROFILE

Marshall International for Consulting

# 2020

Management Consulting

Technical Consulting



**Marshall International** consulting was established on march 2012. Marshall is a private consulting company specializing in providing management, technical and (M & E) for reconstruction projects and humanitarian assistance in Yemen . Our strength is based on the long experienced of the management team of qualified local and international consultants in the fields and services according to quality standards.





## Our Vision

Leading and excellence in providing management and mechanical consultancy at the international level.

## Our Mission

Provide monitoring and evaluation with a view to assessing the past , observe the present and planning for the future on lessons learned outcomes from projects funded and supported by international non-governmental organizations, the United Nations and other international agencies



## Our objective

Providing professional management and technical services consulting with innovative and high quality solutions.



## Our behaviors

Respect our customers - Transparency - Credibility - Accuracy - Confidence building and Valuation .

## Management Consulting

### 1- monitoring and evaluation :

- Initial assessment and basic studies.
- Qualitative and quantitative analysis.
- Situation of IDPs and displaced persons.
- Analysis of statistical data.
- Sectors (Education - Health - Food Security and Agriculture - Water and Sanitation.
- Protection of women and children.
- Construction and rehabilitation projects.
- Poverty Analysis.
- Cash support Projects.
- Review and evaluate policies and procedures of local Organizations.

### 2- Management of developmental and relief projects.

### 3- logistic's.

### 4- Humanitarian response interventions.

### 5- Surveys and studies of social, human and development.

### 6- Development and capacity-building.

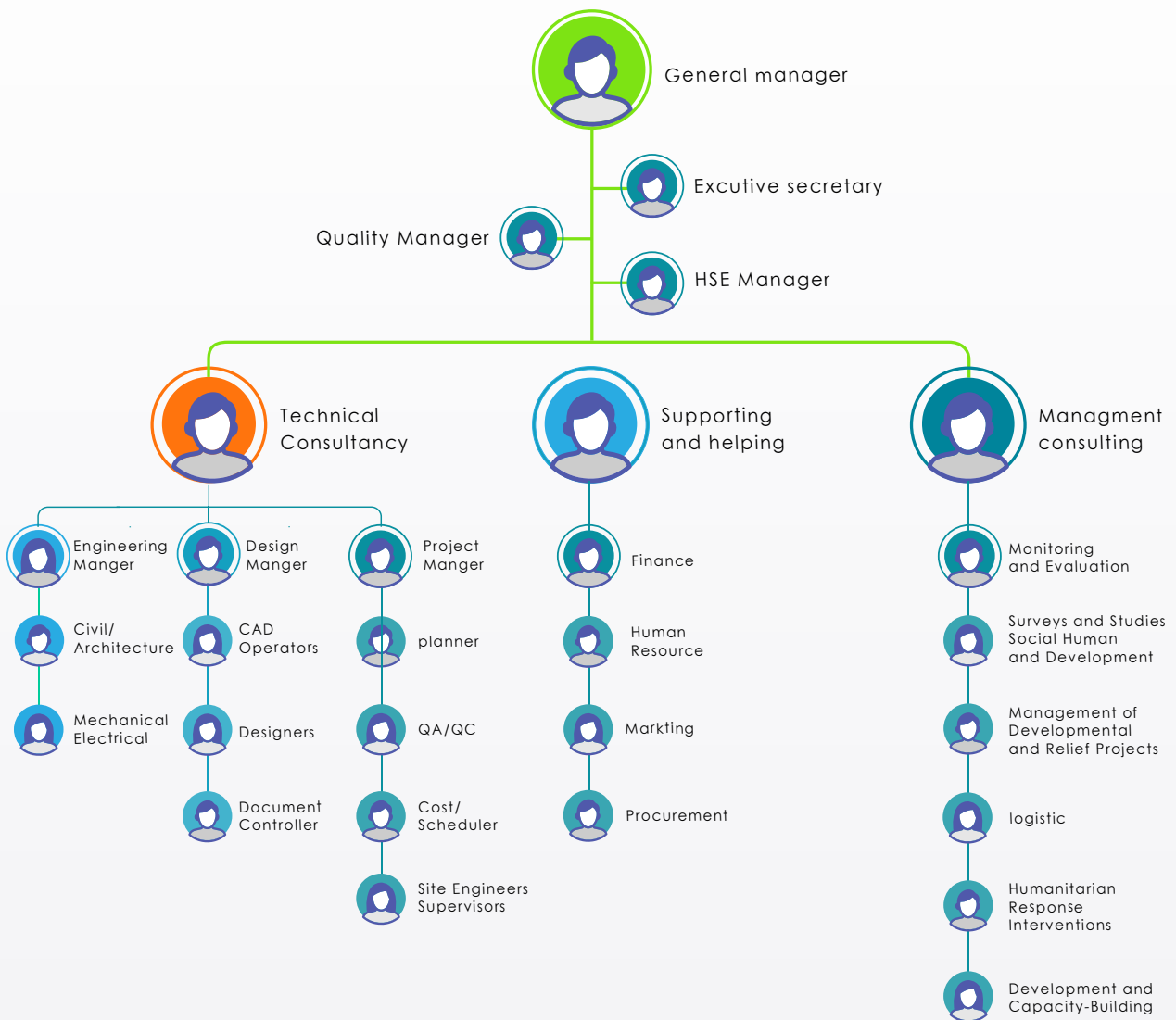
### 7- Third party Monitoring.



## Technical Consulting

- Preparation of Strategic Planning.
- Preparation of Feasibility Studies.
- Environmental Impact Studies.
- Preliminary Designs.
- Detailed Working Drawings.
- Technical Specifications.
- Bills of Quantities.
- Conditions of Contracts.
- Analysis of Tenders.
- Construction Management.
- Project Management.
- Supervision of Construction.
- Preparation of Interim and Final Payments.
- Control of Materials Testing.
- Plant Utilization and Cost Control.
- Systems Design and Integration.
- Operation Consultancy.
- Training and Support.
- Digital Mapping and GIS Analysis.
- Simulation and Modeling.
- E & M For Projects.
- Survey and Studies.









## Head Office:

- 🏠 **Yemen-Sana'a** ,Haddah str.  
in Front of AL-Jndol Market
- ✉ P.O. Box: 16691
- ☎ +967 773 105 555
- ☎ +967 1 418 875
- ☎ +967 1 418 876
- @ info@marshall-int.com
- 🌐 www.marshall-int.com

## Aden Branch:

- 🏠 Aden-Khour Makser Area
- ✉ P.O. Box: 16691
- ☎ +967 777 039 461
- ☎ +967 2 276726
- ☎ +967 2 276726
- @ aden@marshall-int.com  
info@marshall-int.com
- 🌐 www.marshall-int.com







 **MARSHALL**<sup>®</sup>  
International  
for Consulting

[info@marshall-int.com](mailto:info@marshall-int.com)  
[www.marshall-int.com](http://www.marshall-int.com)